



CONTOUR
PLY

Ci/StB

(42)

Xi4

May 2009



INNOVATIVE SOLUTIONS FOR THE SUPPLY OF PIPE BOXING

CONTOUR-PLY™ PROVIDING INNOVATIVE SOLUTIONS

WWW.CONTOURPLY.CO.UK

CONTENTS

| | |
|---|--------------------|
| INTRODUCTION | INSIDE FRONT COVER |
| OUR SERVICES | 1 |
| AKZONOBEL INTERPON® ANTI-MICROBIAL PROTECTION | 2 |
| CONTOUR-PLY PREFORMED PIPE BOXING SYSTEMS | 4 |
| DESCRIPTION | 4 |
| FINISHES | 5 |
| JOINTS | 5 |
| TECHNICAL PERFORMANCE | 5 |
| 5MM DOMESTIC PIPE BOXING | 6 |
| 8MM COMMERCIAL PIPE BOXING | 8 |
| CONTOUR-PLY PREFORMED PLYWOOD RANGES | 11 |
| POLYMER BOXING | 12 |

INTRODUCTION

Factory-finished for a consistently outstanding look in durable white melamine, Contour-Ply™ has revolutionised the preformed pipe boxing marketplace, over the last few years.

Throughout this time, our commitment to quality, value and service has resulted in more and more people using preformed pipe boxing instead of making their own solutions on site.

Our range offers a comprehensive solution for all your pipe boxing requirements, whether you want to box in a single pipe, or are looking for larger quantities for a bigger commercial project. Whatever the job, we have the right pipe casing product - at the right price!

Significant stock levels ensure standard pipe casings are available ex-stock.

The Contour-Ply™ domestic pipe boxing range includes 'L-section' pipe casings and 115° skirting pipe covers. Pipe covers are 5mm thick and finished in white melamine - to give a neat, easy-to-install solution whenever and wherever you need to cover unsightly pipes or cables around the home.

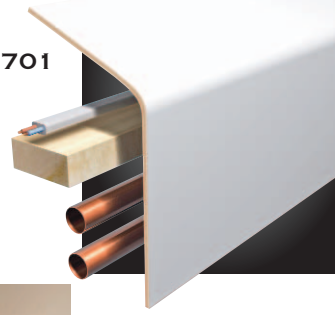
Our commercial pipe casing range is 8mm thick and designed to take the rigours of tougher environments, such as schools, hospitals, shops and offices - in both 'L-section' and 'U-section' profiles.



Contour-Ply™ Products, Halesfield 19, Telford, Shropshire TF7 4QT

Tel: 01952 685700 Fax: 01952 685701

Email: sales@contourply.co.uk Web: www.contourply.co.uk



CONTOUR-PLY™ DOMESTIC PIPE BOXING

Robust, cost-effective and attractive, Contour-Ply™ profiles provide the perfect solution for concealing unsightly pipework.

Contour-Ply™ domestic boxing is designed specifically for use in light duty applications such as housing projects. The casings offer a number of benefits over traditional site made boxing, including:

- It is pre-finished and ready to install, eliminating costly and disruptive wet trades
- It is strong & lightweight
- It is almost half the weight of MDF products, making it far easier to work with at high levels
- It has no joints - eliminating unhygienic dirt traps
- It is quick and easy to fit - saving time and money
- It is versatile and suitable for a wide range of applications - covering pipes, cables, structural elements, window cills, etc



CONTOUR-PLY™ COMMERCIAL PIPE BOXING

Robust, cost-effective and attractive, Contour-Ply™ pipe boxing profiles provide the perfect solution for concealing unsightly pipework.

Contour-Ply™ commercial pipe boxing is designed specifically for use in medium to heavy duty applications such as school, hospital, retail or office projects.

The pipe casings offer a number of benefits over traditional site made pipe boxing, including:

- It is pre-finished and ready to install, eliminating costly and disruptive wet trades
- It is strong & lightweight
- It has no joints - eliminating unhygienic dirt traps
- It is quick and easy to fit - saving time and money
- It is versatile and suitable for a wide range of applications - covering pipes, cables, structural elements, window cills, etc
- It is available in a wide range of finishes, including veneers, laminates & metallics.

CONTOUR-PLY™ PREFORMED PIPE BOXING SYSTEMS

DESCRIPTION

Contour-Ply™ is the brand name for a family of products which all utilise the same remarkable material – preformed plywood.

Through the development of moulds, coupled with artisan skills and the highest quality materials, we are able to offer an almost unlimited range of shapes and sizes of Contour-Ply™ which can be used in a wide array of industries and applications. The only limit is your imagination.

The Contour-Ply™ L section profile is extremely versatile and has many uses including:

- Pipe boxing (heating, waste, soil pipes etc)
- Column casings
- Window cills
- Bulkhead casings
- Soffit panels
- Uplighting fixtures
- Roller shutter housings
- Heat recovers duct casings
- Cornices

Contour-Ply™ 115° section profile is an economical and aesthetic solution for covering exposed wiring and central heating pipework.

The sloping top enables the profile to blend in within a domestic environment, looking like a skirting board or a cornice, however is deep enough to comfortably conceal pipework up to 32mm in diameter.

Contour-Ply™ U sections are one piece pipe boxing channels in popular sizes designed for boxing in pipework in mid wall applications or covering exposed structural work.

They are supplied as standard pre-finished externally in white melamine.

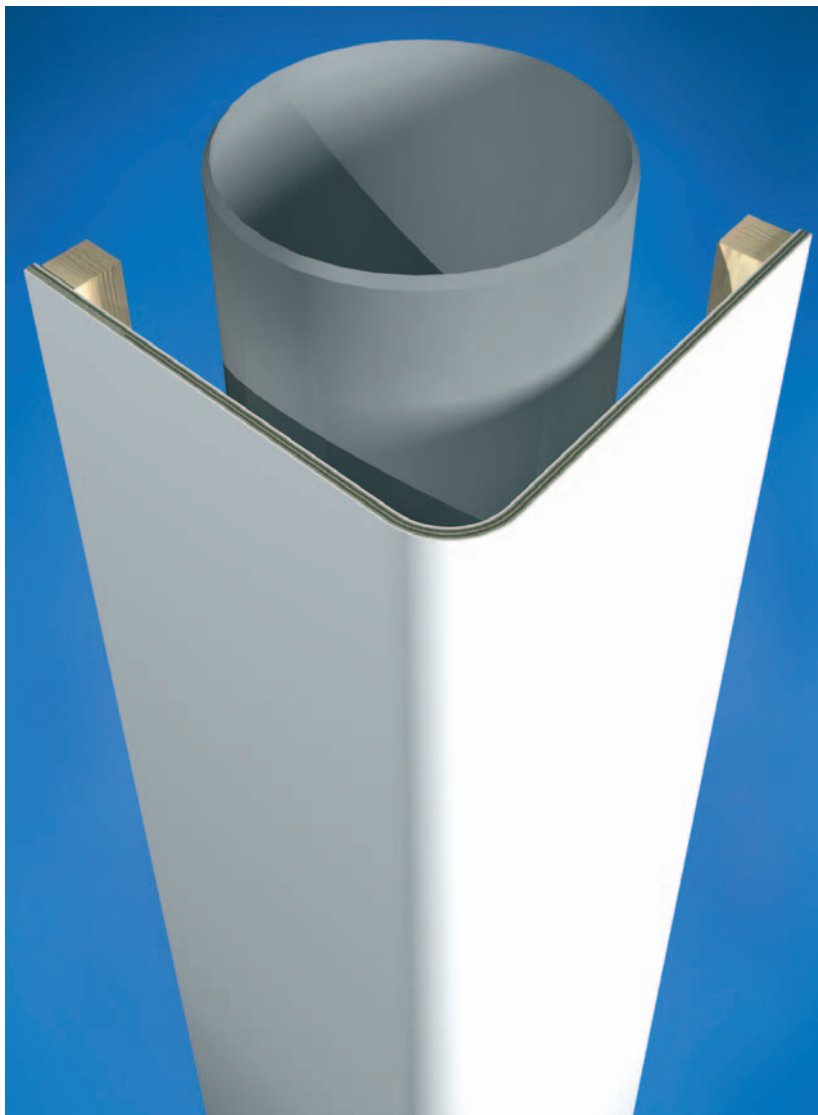
Alternatively the profiles can be finished with high pressure laminates, real wood veneers or in an MDF finish for site painting.

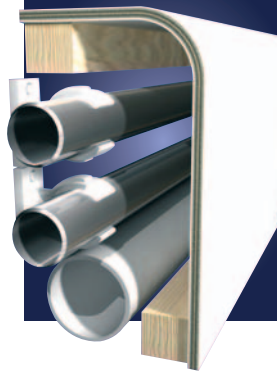
For applications where infection control is important, Contour-Ply™ also offers AkzoNobel Interpon® anti-microbial paint finish on profiles.

Profiles are complemented with a range of accessories to form a complete boxing system. These include factory made internal corners, external corners, stop ends and butt joint covers.

Vented profiles are also available. Profiles are lightweight, strong and very easy to cut with hand tools. Contour-Ply™ casings are quick and simple to install, considerably reducing disruption to building tenants during installation.

The speed of installation also provides healthy labour savings against site made solutions.





FINISHES

Melamine

As standard, profiles are pre-finished externally in white melamine to ensure the correct balancing of veneers providing optimum stability and preventing warpage or movement of the profile.

AkzoNobel Interpon®

To enable you to provide a complete anti-microbial solution, Contour-Ply™ pipe boxing is available finished in AkzoNobel Interpon®.

High Pressure Laminates

Selection of the appropriate finish to suit the service conditions of the product is essential. The standard melamine is not recommended for use in areas prone to impact, scuffing or high traffic.

For these applications we recommend the use of high pressure laminates. We can apply laminates from a wide range of manufacturers including Formica, Polyrey, Trespa and Egger.

The laminate selected must be of postforming grade and our technical department is happy to advise of any constraints.

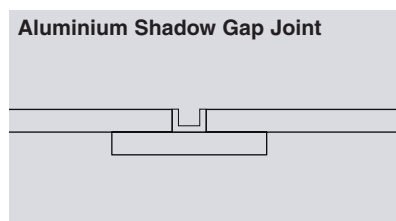
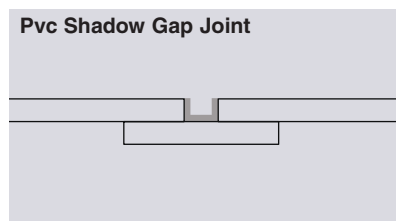
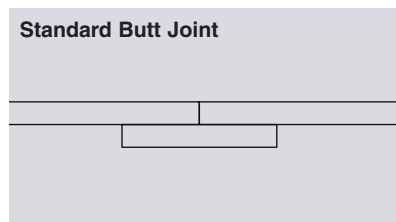
Natural Wood Veneers

An extensive range of carefully selected veneers is available, and the veneer finish can be supplied with a protective varnish or lacquer where appropriate.

JOINTS

When joints are required in profiles to create extended legs, the abutting profile edges are glued and the joint is reinforced by a plywood fillet glued and stapled on the reverse face.

When joints are formed using a shadow gap, the channel section is inserted between the profiles and glued into place. A reinforcing fillet is then glued and stapled on the reverse face, in the same fashion as standard butt joints



TECHNICAL PERFORMANCE

Spread of Flame

When tested in accordance with BS476 parts 6 & 7, standard Contour-Ply™ profiles achieve Class 3 surface spread of flame.

Where a higher classification is required for wall surfaces generally, Contour-Ply™ profiles fall within the definition of wall and ceiling surfaces as defined under paragraphs 6.2 and 6.3 of the Building Regulations, and can therefore be included in the surface areas (not more than half the floor area of the room) for which Class 3 is permissible. Profiles with higher performing spread of flame classifications are available.

Stability

Contour-Ply™ profiles will not warp even when fixed in close proximity to heating pipes.

Application – Standard profiles are designed for use internally. Marine grade moisture resistant profiles for use externally or use in wet areas are available. Please contact us for details.

CONTOUR-PLY™ PREFORMED PIPE BOXING SYSTEMS

5MM DOMESTIC PIPE BOXING

115° Section Profiles

Standard Specification:

Contour-Ply™ 5mm 115° section domestic pipe boxing.

Ref:

5mm Domestic 115° profile.

Manufacturer:

Contour-Ply™ Products,

Halesfield 19, Telford,

Shropshire TF7 4QT

Tel: 01952 685700

Fax: 01952 685701

Email: sales@contourply.co.uk

Web: www.contourply.co.uk

Size:

Various from 45 x 150mm to 75 x 370 x 75mm channel.

Material Thickness:

5mm

Lengths:

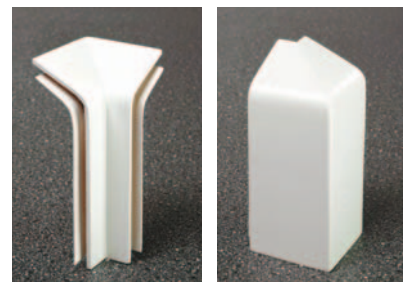
2500mm

Finish:

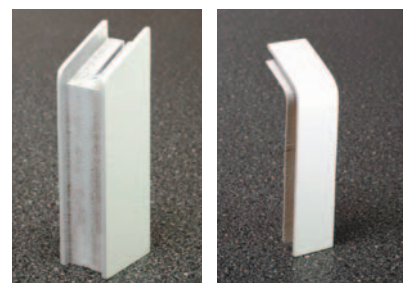
Supplied as standard in a white melamine finish. Also available in veneers and AkzoNobel Interpon® anti-microbial paint. Please contact the Contour-Ply™ sales department for more information on finishes.

Accessories:

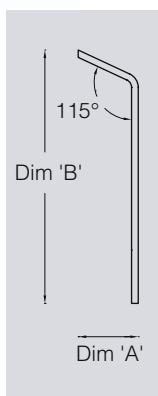
- Internal corners (90°)
- External corners (90°)
- Stop ends
- Butt joint covers
- Timber fixing battens
- Fixing screws



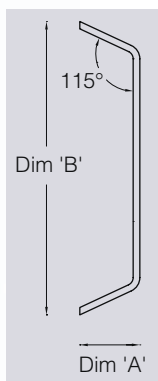
90° Internal corners 90° External corners



Stop ends Butt joint covers



| 115° Single Angles - Standard Sizes | | | | |
|-------------------------------------|---------------|--------------|----------------|-------------|
| Ref | Height (mm) B | Depth (mm) A | Thickness (mm) | Length (mm) |
| 15S1225 | 125 | 25 | 5 | 2500 |
| 15S1145 | 110 | 45 | 5 | 2500 |
| 15S1545 | 150 | 45 | 5 | 2500 |
| 15S1945 | 190 | 45 | 5 | 2500 |
| 15S1475 | 145 | 75 | 5 | 2500 |
| 15S1875 | 180 | 75 | 5 | 2500 |
| 15S2275 | 220 | 75 | 5 | 2500 |



| 115° Double Angles - Standard Sizes | | | | |
|-------------------------------------|---------------|--------------|----------------|-------------|
| Ref | Height (mm) B | Depth (mm) A | Thickness (mm) | Length (mm) |
| 15D1345 | 135 | 45 | 5 | 2500 |
| 15D2245 | 220 | 45 | 5 | 2500 |
| 15D3045 | 300 | 45 | 5 | 2500 |
| 15D2075 | 200 | 75 | 5 | 2500 |
| 15D3775 | 370 | 75 | 5 | 2500 |



5MM DOMESTIC PIPE BOXING

90° L Section Profiles

Standard Specification:

Contour-Ply™ 5mm 90° L section domestic pipe boxing. 21.5mm diameter internal radius and 26.5mm diameter external radius.

Ref:

5mm Domestic 90° profile

Manufacturer:

Contour-Ply™ Products,
Halesfield 19, Telford,
Shropshire TF7 4QT
Tel: 01952 685700
Fax: 01952 685701
Email: sales@contourply.co.uk
Web: www.contourply.co.uk

Size:

Various from 75 x 150mm to 300 x 300mm

Material Thickness :

5mm

Lengths:

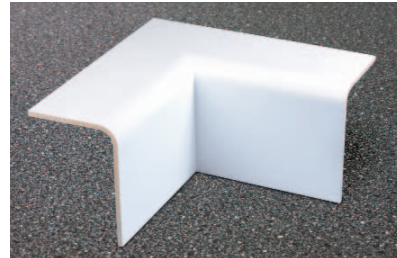
2500mm or 3000mm

Finish:

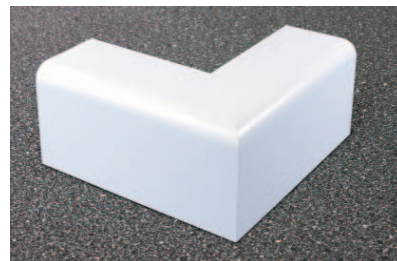
Supplied as standard in a white melamine finish, balanced internally. Also available in veneers and AkzoNobel Interpon® anti-microbial paint. Please contact the Contour-Ply™ sales department for more information on finishes.

Accessories:

- Internal corners (90°)
- External corners (90°)
- Stop ends
- Butt joint covers
- Timber fixing battens
- Fixing screws



90° Internal corners



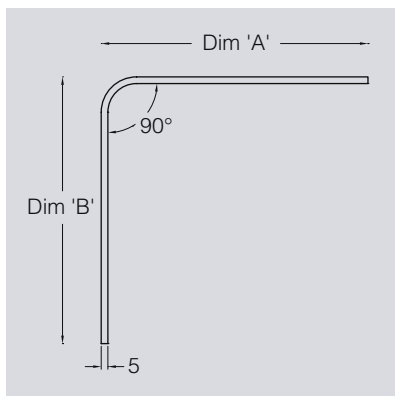
90° External corners



Stop ends



Butt joint covers



| 5mm L Section Domestic Boxing - Standard Sizes | | | | | |
|--|---------------|----------------|--------------|------|----------------|
| Depth (mm) A | Height (mm) B | Thickness (mm) | Lengths (mm) | | Finish |
| 75 | 150 | 5 | 2500 | 3000 | White Melamine |
| 75 | 200 | 5 | 2500 | 3000 | |
| 75 | 300 | 5 | 2500 | 3000 | |
| 100 | 100 | 5 | 2500 | 3000 | |
| 100 | 200 | 5 | 2500 | 3000 | |
| 100 | 300 | 5 | 2500 | 3000 | |
| 150 | 150 | 5 | 2500 | 3000 | |
| 150 | 200 | 5 | 2500 | 3000 | |
| 150 | 300 | 5 | 2500 | 3000 | |
| 200 | 200 | 5 | 2500 | 3000 | |
| 200 | 300 | 5 | 2500 | 3000 | |
| 300 | 300 | 5 | 2500 | 3000 | |

CONTOUR-PLY™ PREFORMED PIPE BOXING SYSTEMS

8MM COMMERCIAL PIPE BOXING

90° L Section Profiles

Standard Specification:

Contour-Ply™ 8mm 90° L section commercial pipe boxing. 21.5mm diameter internal radius and 29.5mm diameter external radius.

Ref:

8mm Commercial 90° profile

Manufacturer:

Contour-Ply™ Products,
Halesfield 19, Telford,
Shropshire TF7 4QT
Tel: 01952 685700
Fax: 01952 685701
Email: sales@contourply.co.uk
Web: www.contourply.co.uk

Size:

Various from 75 x 150mm to 500 x 500mm.

Material Thickness :

8mm

Lengths:

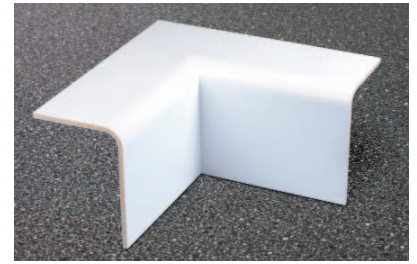
2500mm or 3000mm

Finish:

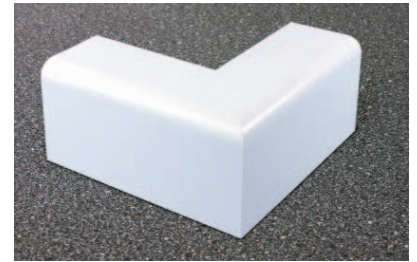
Supplied as standard in a white melamine finish, balanced internally. Also available in high pressure laminates, veneers and AkzoNobel Interpon® anti-microbial paint. Please contact the Contour-Ply™ sales department for more information on finishes.

Accessories:

- Internal corners (90°)
- External corners (90°)
- Stop ends
- Butt joint covers
- Timber fixing battens
- Fixing screws



90° Internal corners



90° External corners

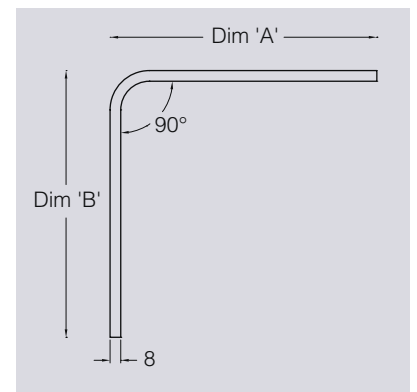


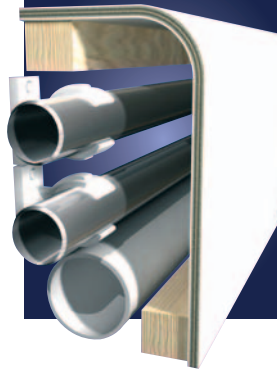
Stop ends



Butt joint covers

| 8mm L Section Commercial Boxing - Standard Sizes | | | | | |
|--|---------------|----------------|--------------|------|----------------|
| Depth (mm) A | Height (mm) B | Thickness (mm) | Lengths (mm) | | Finish |
| 100 | 100 | 8 | 2500 | 3000 | White Melamine |
| 100 | 200 | 8 | 2500 | 3000 | |
| 100 | 300 | 8 | 2500 | 3000 | |
| 100 | 400 | 8 | - | 3000 | |
| 100 | 500 | 8 | - | 3000 | |
| 150 | 150 | 8 | 2500 | 3000 | |
| 150 | 200 | 8 | 2500 | 3000 | |
| 150 | 300 | 8 | 2500 | 3000 | |
| 150 | 400 | 8 | - | 3000 | |
| 150 | 500 | 8 | - | 3000 | |
| 200 | 200 | 8 | 2500 | 3000 | |
| 200 | 300 | 8 | 2500 | 3000 | |
| 200 | 400 | 8 | - | 3000 | |
| 200 | 500 | 8 | - | 3000 | |
| 300 | 300 | 8 | 2500 | 3000 | |
| 300 | 400 | 8 | - | 3000 | |
| 300 | 500 | 8 | - | 3000 | |





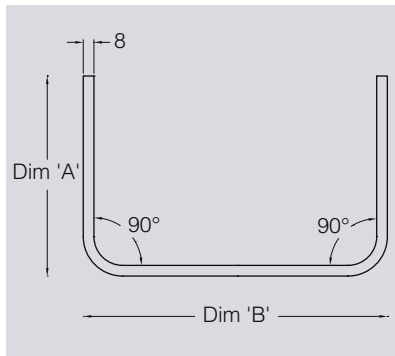
8MM COMMERCIAL PIPE BOXING

180° U Section Profiles

Contour-Ply™ U sections are one piece pipe boxing channels in popular sizes designed for boxing in pipework in mid wall applications or covering exposed structural work.

- **Low Cost** - significantly lower cost than making on site.
- **Available ex-stock.**

The wide variety of sizes means that pipe boxing profiles are available for a wide range of applications from single pipes through to use above or below boilers.



Standard Specification:

Contour-Ply™ 8mm 180° U section commercial pipe boxing. 21.5mm diameter internal radius and 29.5mm diameter external radius.

Ref:

8mm Commercial 180° profile.

Manufacturer:

Contour-Ply™ Products,
Halesfield 19, Telford,
Shropshire TF7 4QT
Tel: 01952 685700
Fax: 01952 685701
Email: sales@contourply.co.uk
Web: www.contourply.co.uk

Size:

Various from 100 x 200 x 100mm to 200 x 400 x 200mm.

Material Thickness :

8mm

Lengths:

3000mm

Finish:

Supplied as standard in a white melamine finish, balanced internally. Also available in veneers and AkzoNobel Interpon® anti-microbial paint. Please contact the Contour-Ply™ sales department for more information on finishes.

Accessories:

- Internal corners (90°)
- External corners (90°)
- Stop ends
- Timber fixing battens
- Fixing screws

| 8mm U Section Commercial Boxing - Standard Sizes | | | | |
|--|---------------|----------------|--------|----------------|
| Depth (mm) A | Height (mm) B | Thickness (mm) | Length | Finish |
| 100 | 200 | 8 | 3000 | White Melamine |
| 150 | 200 | 8 | 3000 | |
| 200 | 200 | 8 | 3000 | |
| 100 | 400 | 8 | 3000 | |
| 150 | 400 | 8 | 3000 | |
| 200 | 400 | 8 | 3000 | |

CONTOUR-PLY™ PREFORMED PIPE BOXING SYSTEMS

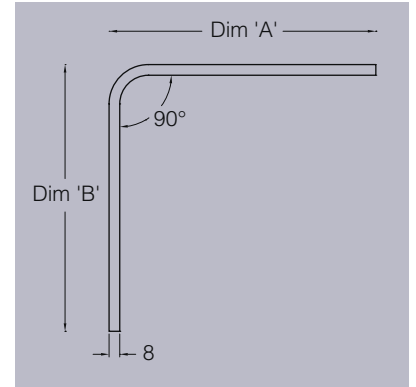
8MM COMMERCIAL PIPE BOXING

Vented Pipe Boxing

A comprehensive range of Contour-Ply™ vented pipe boxing is now available to enable heat recovery on one pipe systems.

Pipe boxing profiles are CNC routed to provide free air flow around pipework which contributes to the overall heat of a room.

Supplied as standard in a white melamine finish, vented pipe casings are also available in veneers, laminates and metallic finishes.



| 8mm Commercial Boxing - Standard Sizes - Vented | | | | | |
|---|--------------|----------------|--------------|------|----------------|
| Height (mm) A | Depth (mm) B | Thickness (mm) | Lengths (mm) | | Finish |
| 100 | 200 | 8 | 2500 | 3000 | White Melamine |
| 100 | 300 | 8 | 2500 | 3000 | |
| 150 | 200 | 8 | 2500 | 3000 | |
| 150 | 300 | 8 | 2500 | 3000 | |
| 200 | 200 | 8 | 2500 | 3000 | |
| 200 | 300 | 8 | 2500 | 3000 | |
| 300 | 200 | 8 | 2500 | 3000 | |
| 300 | 300 | 8 | 2500 | 3000 | |

AKZONOBEL INTERPON® FINISHED CONTOUR-PLY

Interpon AB

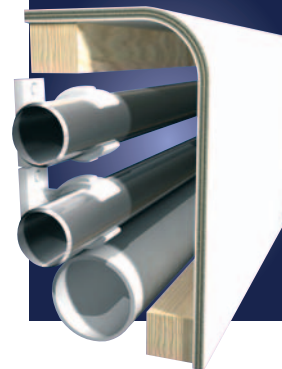


AkzoNobel Interpon®

To enable you to provide a complete anti-microbial solution, Contour-Ply™ pipe boxing is available finished in AkzoNobel Interpon® AB. Interpon AB powder coatings have been developed to aid the inhibition of bacterial growth on coating surfaces. The anti-

bacterial effect is based on a silver complex integrated into the coating during manufacture

The hard wearing paint finish is available in a wide range of colours. For more information, please contact our Technical Services team on **01952 685700**.



CONTOUR-PLY™ PREFORMED PLYWOOD RANGES

Standard Specification

A range of casings and enclosure systems specifically designed to enclose services in a functional and aesthetic manner. Ranges can be used independently or as a collection of products that work together using complementary radii to achieve the complete building interior.

All of the ranges can be used to enclose services both horizontally and vertically and are all demountable for easy access. Where the standard range of casings do not meet individual project requirements, composite solutions can be provided for individual applications.

Materials are supplied pre-finished and ready to install. Complementary accessories reduce the need for specialist joinery skills and facilitate quick, efficient installation.

The manufacturing process for plywood casings results in an extremely strong but lightweight construction, with a moisture content of between 6% and 8%, ensuring greater stability than normal construction timber and enables the profiles to be positioned in close proximity to heat emitters and pipes.

Contour-Ply™ Preformed Plywood Pipe Boxing

Contour-Ply™ casings are primarily designed for covering and protecting larger diameter pipework, including heating services, soil and vent pipework, rainwater pipes, heat recovery ducting, etc.

All profiles are 115° or 90° angles, with radiused corners.

Material thickness:

5 mm or 8 mm.

Standard lengths:

2500 mm and 3000 mm.

Finish / Colour:

White Melamine, high pressure laminate, veneer or plain.

Contour-Ply™ pipe boxing ranges are available with complementary accessories for use in horizontal applications at floor and ceiling level. Intermediate sizes are available to suit individual applications.

Contour-Ply™ range of casings - Standard Sizes from 75 x 100mm up to 300 x 500mm. Material thickness: 5mm or 8mm. (Each leg can be cut to 65mm minimum).

Accessories:

Internal and external corners. Butt joints. Stop ends. Shadow gap joints.

Factory fitted edge shadow gaps (black finish for use with black screws), to provide discreet fixing location and material for scribing.

Profiles can be supplied with integral ventilation grilles, or grille patterns can be cut into the material on both legs of the casings, to allow the heat from pipework to flow freely into the occupancy. Grille patterns are uniformly spaced to provide a tolerance gap for cross cutting on site. The minimum leg length for casings with grille patterns is 100mm.

Profiles are available in a wide range of finishes to meet virtually all service conditions for building interiors.

The profiles are fixed to softwood battens, available as part of the system. When determining the size of the profile it is important to take into account the size and positioning of the battens.

Long runs of sections are joined together using butt joints incorporating a joint cover strip, or utilising a shadow gap joint.

Consult with Contour-Ply™ technical literature for details. Contour-Ply™ Products can also provide a design and specification advisory service.



WWW.CONTOURPLY.CO.UK

Contour-Ply™ Products
Halesfield 19, Telford, Shropshire
TF7 4QT
Tel: 01952 685700
Fax: 01952 685701
Email: sales@contourply.co.uk
Web: www.contourply.co.uk

*'Contour-Ply™' is a trading name of
Alumasc Interior Building Products Limited.*

